


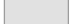

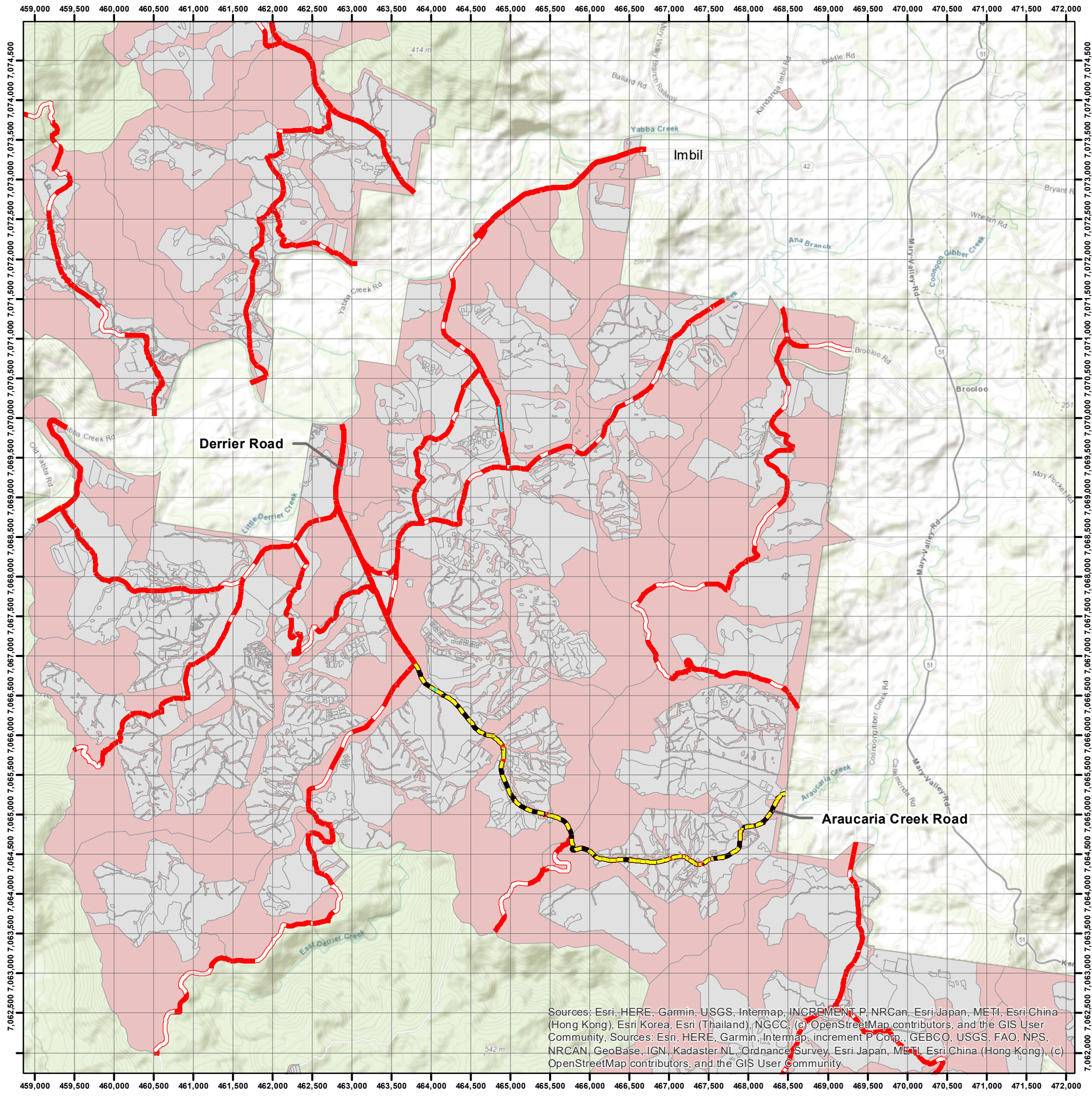


# Road Closure Imbil SF

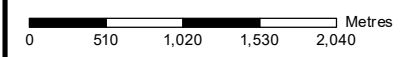
## Derrier Road/Araucaria Creek Road

-  Road Closure
-  Arterial Road
-  Secondary Road
-  HQP Plantation
-  HQP Custodial Lands



Sources: Esri, HERE, Garmin, USGS, Intermap, INCREMENT P, NRCan, Esri Japan, METI, Esri China (Hong Kong), Esri Korea, Esri (Thailand), NGCC, (c) OpenStreetMap contributors, and the GIS User Community, Sources: Esri, HERE, Garmin, Intermap, increment P Corp., GEBCO, USGS, FAO, NRS, NRCAN, GeoBase, IGN, Kadaster NL, Ordnance Survey, Esri Japan, METI, Esri China (Hong Kong), (c) OpenStreetMap contributors, and the GIS User Community


When printed at A3: Scale: 1:50,000 and 1 cm = 500 metres



Prepared by HQPlantations Pty Ltd. solely for internal use. HQPlantations Pty Ltd does not accept any responsibility for any loss or damage resulting from reliance on the map. No part of this map may be reproduced or copied in any form without prior written permission from HQPlantations Pty Ltd. All rights reserved. ©

Filepath: W:\Inland\Stewardship\Road Closures\Road Closure Araucaria.mxd  
User: DoddR  
Date: 18/09/2024

N



MGA Zone 56 